

Board Meeting

Date and time:	Wednesday 12th February at 1030am
Attendees:	<ul style="list-style-type: none"> • Meredith Bates (MB), Mott MacDonald – Chair • Peter Busfield (PB), NZ Marine - VC • Genevieve Sage (GS), Waitemata Local Board (joined online) • Bernard Trevor (BT), ASB • Tim Marsh (TM) Kiwi Property • Anita Potgieter (AP), Visa • Michael Hawes (MH), Warren and Mahoney • Peter Young (PY), Sanford • Mark Ruddlesden (MR), Carbn NZ • Bridget Law (BL) Eke Panuku
Apologies:	<ul style="list-style-type: none"> • Fiona Knox (FK), Eke Panuku • Lauren Arms (LA), Precinct Properties • Pete Bowden (PBO), VHHL/Tramco • Brett Sweetman (BS), Park Hyatt Auckland • Brigid Rogers (BR), WQ TMA Coordinator • Greg Moyle (GM), Waitemata Local Board • Tom Locke (TL), Warren and Mahoney • Sharon Byrne (SB), Auckland Theatre Company
Guests:	<ul style="list-style-type: none"> • Ben Twigden (BT), PAG • Delyth Morgan (DM) Tātaki Auckland Unlimited • Freddie Swanepoel (FS) Tātaki Auckland Unlimited • Amber Carran-Fletcher (ACF) Auckland Transport • Hamish Speakman (HS), Mott MacDonald
Notes taken by:	Meredith Bates
Meeting held at:	Mott MacDonald offices

Item	Discussion and Action	By who
1	Karakia and introductions MB welcomed everyone and asked all attendees to introduce themselves.	
2	Apologies and notes from last meeting / matters arising Apologies were noted as above. The notes of last meeting were agreed by MB & TM.	
3	<p>Moana Festival and events update Delyth Morgan (DM) from Tātaki Auckland Unlimited (TAU) was introduced and explained that she was the major event project lead for the Moana Festival taking place 27 January to 9 March 2025. The event is in full swing and has 4 weeks left. See below for upcoming events:</p> <ul style="list-style-type: none"> • Week 4 - 17 Feb - 23 Feb <ul style="list-style-type: none"> • Z Manus - 22 - 23 February • Sustainability Expo - 22 - 23 February • Mermaid Parade – 22 February • Classic Yacht Regatta – 20 – 23 February • Week 5 - 24 Feb - 2 March <ul style="list-style-type: none"> • Z Manus - 1 March • University Waterski World Champs - 26 February - 2 March • PIC Harbour Classic - 28 February - 1 March • Moana Music - Six60 - 28 February - 1 March • Auckland Wooden Boat Festival Lite – 27 Feb – 1 March • Week 6 - 3 March - 9 March <ul style="list-style-type: none"> • Auckland Boat Show - 6 - 9 March • Moana Auckland Long Lunch – 6 March <p>Pop Up Music – each weekend. Auckland Anniversary Day Regatta was shared showing a lot of activity on water, it was a great success. Eastern Viaduct was hosting a tiny home and garden, bug screen and</p>	

pop-up music events. It will also host the mermaid parade on 22 February. Thanks to EP for providing the support and space.

Moana music open mic competition was a new event for 2025. The competitors thought they were winning one prize but after entries closed Six60 announced that the winners will open their show on 1st March. 12,000 people expected to attend. Winners were announced on Breakfast show this morning. Big thanks to Eke Panuku and Hobson Wharf worked really well for this type of event.

NZ Millenium Cup PB shared images from this event held in early February. Mayor Brown welcomed participants and was involved in several events. Bespoke event areas set up on Halsey Wharf.

Moana Music – Six60 concert - FS is the event facilitator. The main event will be on Saturday 1st March starting at 4pm ending by 10pm. This is the first concert of this size at this waterfront location, based at Jellicoe Harbour. Pack in on 24 February and pack out by 3 March. 12,500+ predicted to attend. There is no integrated ticketing for this event.

Chevron Traffic are responsible for the TMP. They are working with SeaLink on traffic. There will be no parking on Hamer Street on 28 Feb until 2 March (2am). The TMP will be in place from 1 March at 7pm. There will be no parking on Beaumont Street from 7pm (including buses). There will also be a noise management plan in place with the event starting at 4pm and ending at 9.45pm.

PB provided an update on the Auckland on Water Boat Show:

25th edition of the show, 137 exhibitors. 82 exhibitor stands on land as well as 55 companies on water with 110 boats in the marina. Over 500 brands on display. Daters are Thursday 6th March: 10am-6pm Friday 7th March: 10am-6pm, Saturday 8th March: 10am-6pm, Sunday 9th March: 10am-5pm

MB thanks DM and FS for attending.

4 Staff Travel Survey 2024 results

MB introduced HS and thanked EP, HOTC for their support and all the businesses who donated prizes, including: The Park Hyatt, SeaLink, HOTC, Auckland Theatre Company, Auckland on Water Boat Show, and Auckland Transport (Frank Green drink bottles).

HS presented the results of the 2024 STS. The RC for the area set some trip generation targets and these included a 70:30 mode split by 2023. With 70% of all journeys being by sustainable modes (PT & active modes). This has been anecdotally revised to an 80:20 split or even a 90:20 split.

HS reported that 8 businesses had taken part in the survey, and the overall response rate had climbed each year since the start of the survey in 2020 and was now at 71%.

2020: 39%	2022: 47%	2023: 55%	2024: 71%
Average survey response rate	Average survey response rate	Average survey response rate	Average survey response rate

In 2024, eight businesses participated, representing about 5,040 employees across the Wynyard Quarter. In comparison, in 2023 there were eleven businesses that participated, representing about 8,067 employees. Not all businesses that participated in 2023 participated in 2024.

HS reported that 50% of all those driving into Wynyard Quarter lived within 5-minute walk (or 400 metres) of a frequent bus, train station, or ferry connection. A frequent bus service is defined as a service that operates at least every 15 minutes, 7am to 7pm, 7 days a week. This indicates potential to re-mode people who currently drive onto public transport modes. Any improvements to the frequency and spatial coverage of the bus network should be promoted, to help increase the number of people with access to the frequent network.

In 2023 51% were working in the office on the day of the survey. This had risen to 62% in 2024. Working from home had decreased from 2.2 days in 2023 to 1.6 days per week in 2024. There was a significant increase in % of people saying they need to be in the office for work.

For the longest part of the commute respondents were most likely to take the bus (35%), drive alone (23%) or take the train (14%) to work. People aged 18-24 were the least likely to drive alone

(11%), while people aged 45 to 54 were most likely (29%). The proportion of people who used the bus for the longest portion of their journey declined from 39% in 2023 to 35% in 2024. However, train use increased from 11% in 2023 to 14% in 2024. The proportion of people who travelled by car as driver alone increased slightly from 21% in 2023 to 23% in 2024.

Around 41% of respondents reported using a different mode to get to work. Respondents who said they used an active mode were more likely to report using a different mode at least once a week, compared to people who travelled by other modes. About 20% of people who drove to work reported catching the bus or taking the train at least one day per week, compared to about 10% of people who use public transport who said they drove to work at least once a week.

The time of arrival saw a change to be more spread compared to last year. There were also more people leaving early (before 430pm), reflecting people coming into office early and more flexibly to work at home for the later part of the day.

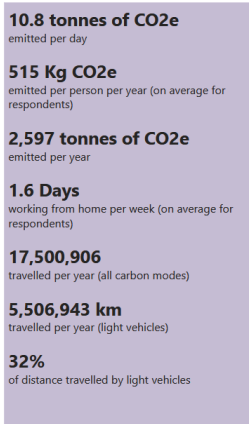
Businesses reported people parking for free then walking 30 minutes into WQ. Most survey respondents who drove parked inside Wynyard Quarter (61%), paid for their parking (70%) and parked in an off-street, public car park (46%). About 16% of survey respondents reported having parking as part of their employment package.

The most common fuel type was petrol at 66%, followed by petrol hybrid and electric, both at 12%, and diesel at 7%. From 2023 to 2024 there was a decline in the proportion of people who travelled by petrol vehicles, from 77% in 2023 to 66% in 2024. Notably, 27% of respondents travelled by car using an electric or hybrid vehicle, increasing from 13% in 2023.

Over 100 respondents indicated that their travel to work would be easier with Te Wero Bridge (Wynyard Crossing) was fixed. NB: the survey took place in October 2024 and the bridge was not reopened until December 2024.

Carbon emissions were calculated using MfE figures along with the PT figures generated by Auckland Transport. The 2024 figures are shown below

All businesses 2024



The per person decline in CO2e can be attributed to several factors, including:

- The use of 2024 emissions factors instead of the 2022 emissions factors. The CO2e from all vehicles (regardless of fuel source) declined.
- The increase in people who drove using an electric or hybrid vehicle.
- A decrease in the average distance that people travelled to work, from about 18km to 14km.
- An increase in the proportion of car drivers who use public transport at least once a week.
- While a high overall response rate was achieved (71%), some businesses had response rates below the target of 60%, which may have influenced the results.

Each business has had their own results presented to them along with the opportunity to interrogate their own results using Power BI. Suggestions have been made as to how sustainable travel could be increased. BR will be following up with businesses in the coming months.

TL asked if wider city centre mode share data from the census could be used by way of comparison. This will be added to the final report.

	MB thanks HS for the presentation.	
5	<p>Updates</p> <p>Chair – MB – no report</p> <p>Waitematā Local Board – GS will provide an update on the CCO review at the next meeting</p> <p>AT – Amber Carran-Fletcher was introduced (ACF). ACF explained there had been a restructure in the team which Adrain Lord headed up and she was now the Travel Choice Manager. The new team was all now appointed and ACF would continue to work with BR.</p> <p>Eke Panuku – Deferred to the next meeting as ran out of time. Possible presentation on the future of the wharfs?</p>	BR
6	<p>Items of interest / AOB</p> <p>TL gave an update on the overnight parking in Auckland City and mentioned that AT have postponed until March 2026 and will be a price by demand model.</p> <p>City Centre Parking Management Plan will be out for consultation soon. BR to contact AT.</p>	BR
	Date of next meeting Wednesday 5th March 2025 1030am at ASB Waterfront Theatre	