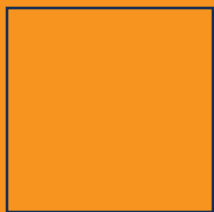


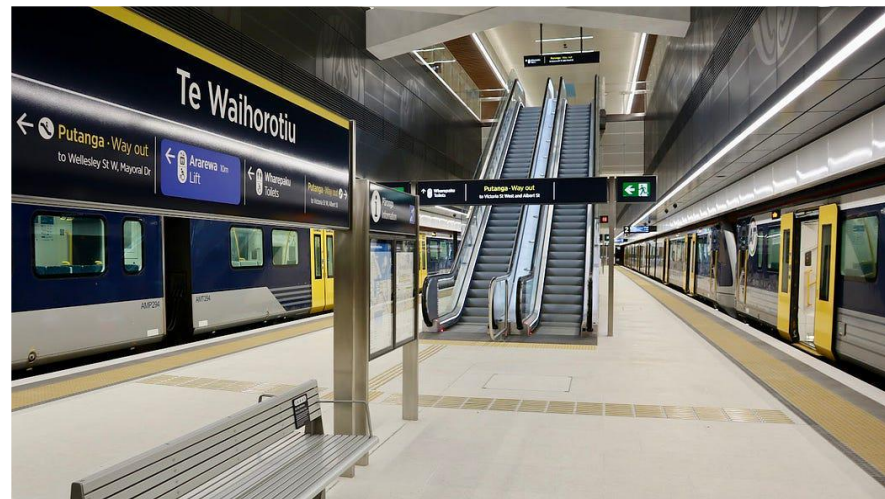
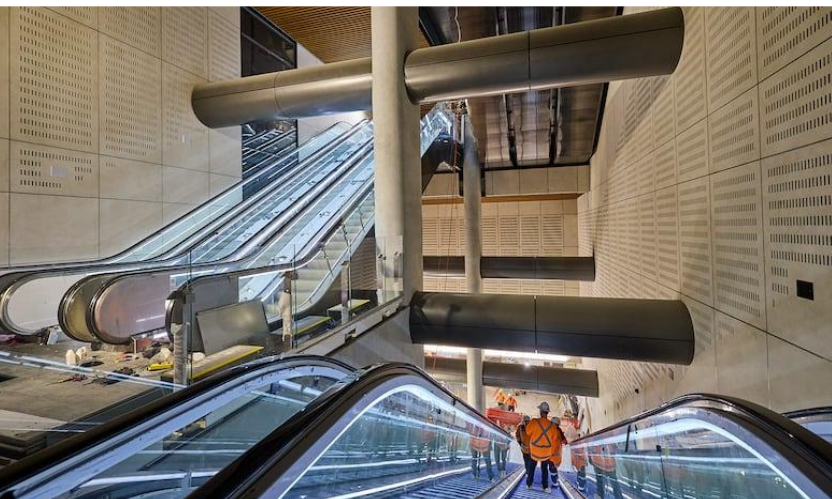
# **City Rail Link Update - WQTMA**





# 4

new or  
upgraded  
world-class  
stations



# Content

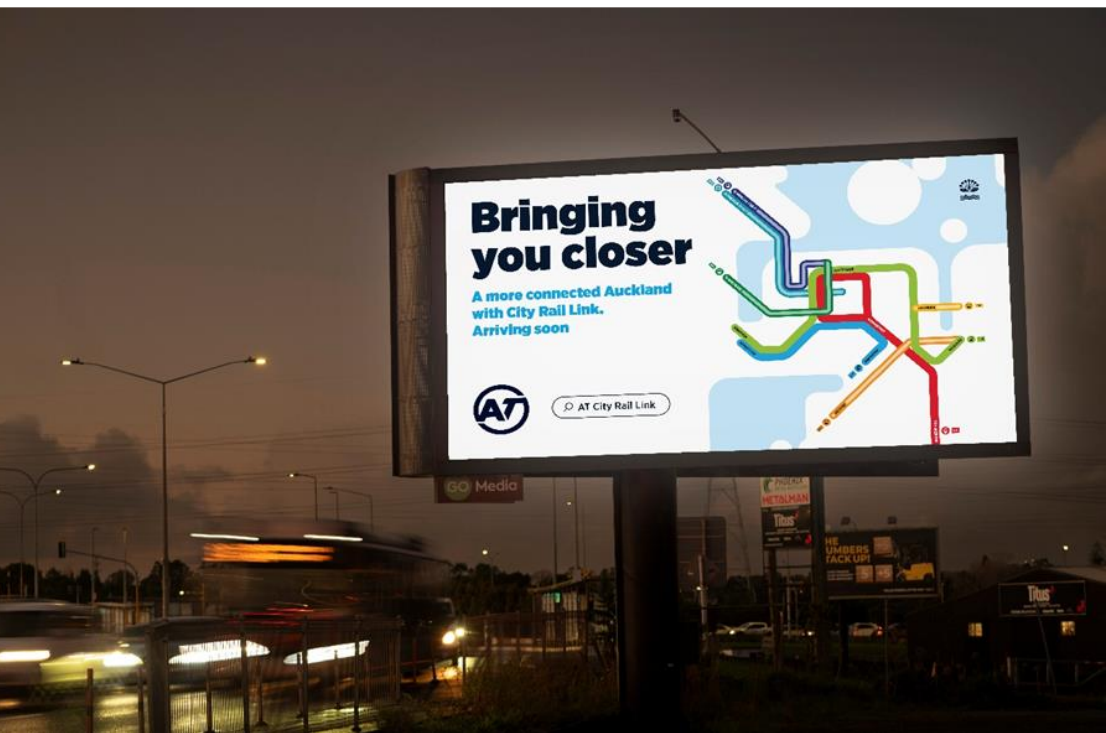
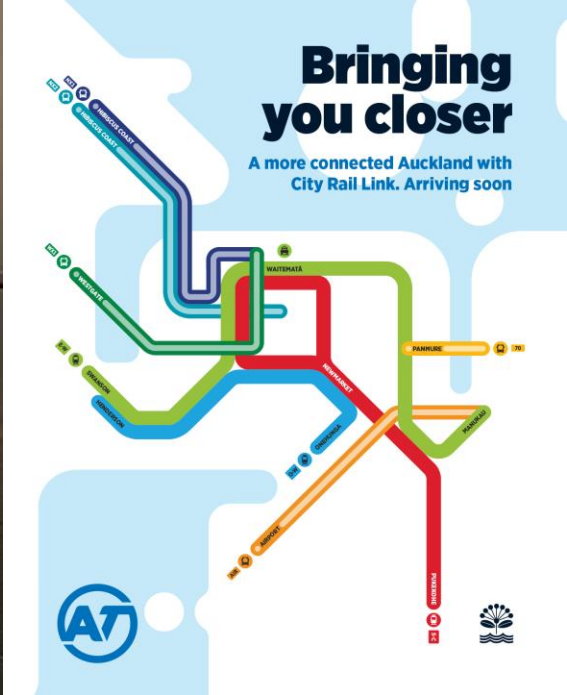
1. Auckland's Rapid Transit Network
2. Updated Rail Network Map
3. Wayfinding Strategy
4. New Timetable



**Your more  
connected Auckland**

**Arriving soon**





# Updated Rail Network map

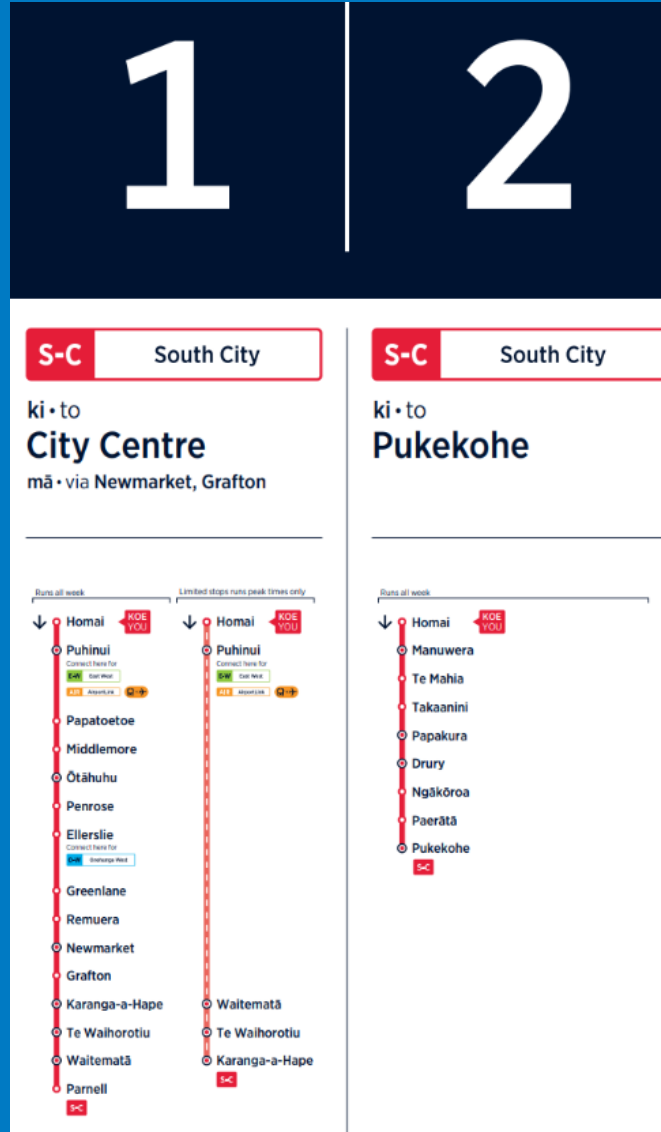


# Wayfinding & customer information hierarchy

## Trains and Rapid Buses



Network Map



Route Line Marker



PID digital screen

# New rail network coming soon



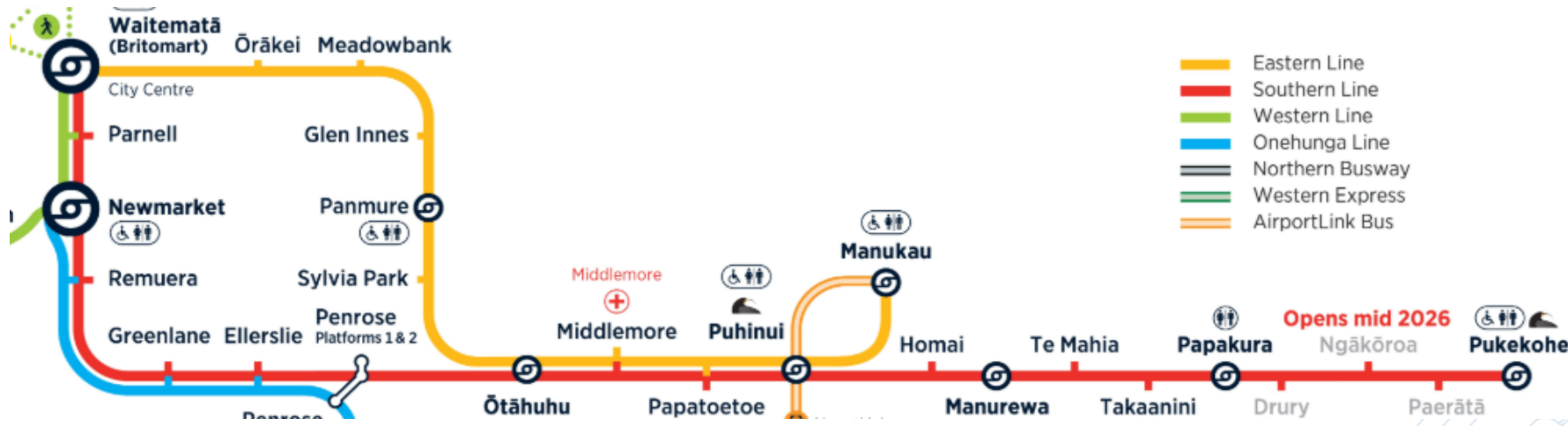
# Current Southern Line



# Future South City Line



# Current Eastern Line

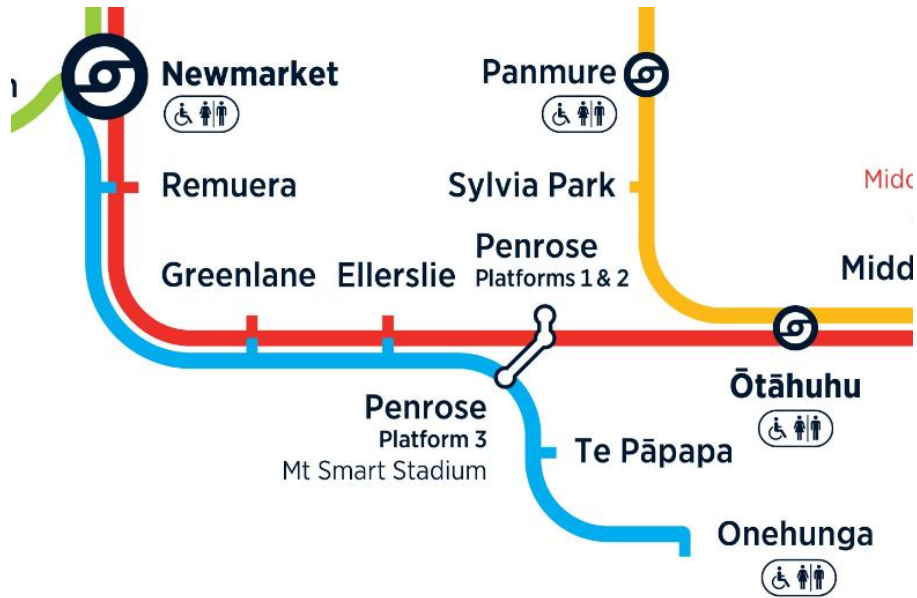


# Future East West Line





# Current Onehunga Line



# Future Onehunga West Line



# Wayfinding Strategy



# New Sign Suite for the City

- The new Wayfinding strategy will provide support for more connected journeys within the city boundary.
- New sign designs and a co-ordinated, consistent and customer tested system including approximately 150 new wayfinding signs across the city.
- 80 of these will be double sided plinth style signs with local area maps and approx. 60 new directional blade clusters.



Artist impression of Elliot st location

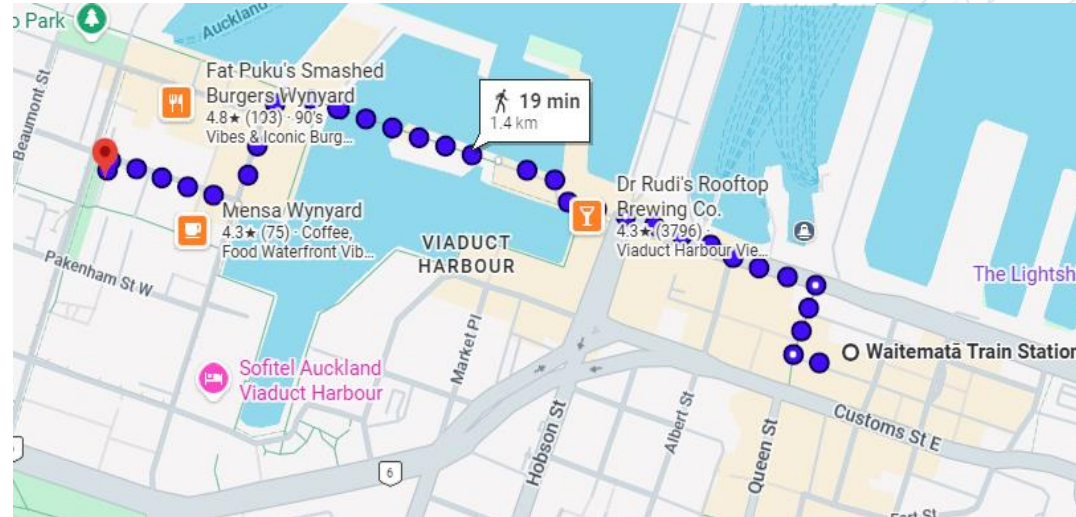
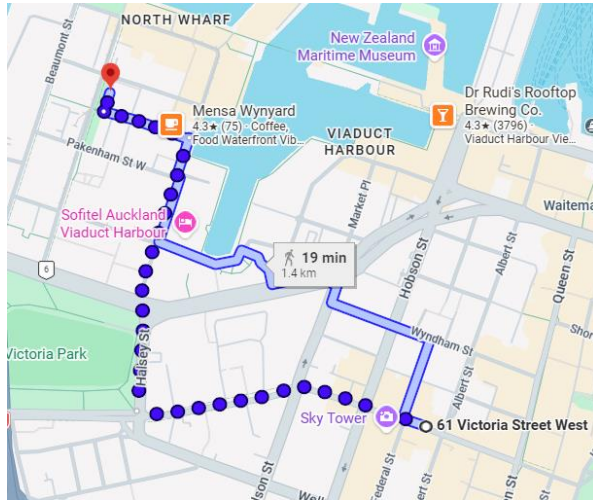


New plinth family



# Customer Journey

- New signage will support pedestrian journeys to and from Waitematā and Te Waihorotiu Stations as well as other locations across the city and encourage exploration.
- The walk from the new Te Waihorotiu station is approx 19 mins. Very similar to the walk from Waitemata Station
- New signage and a future project to upgrade the lower section of Wellesley st West will make the journey from Te Waihorotiu to Wynyard Quarter a more pleasant journey.

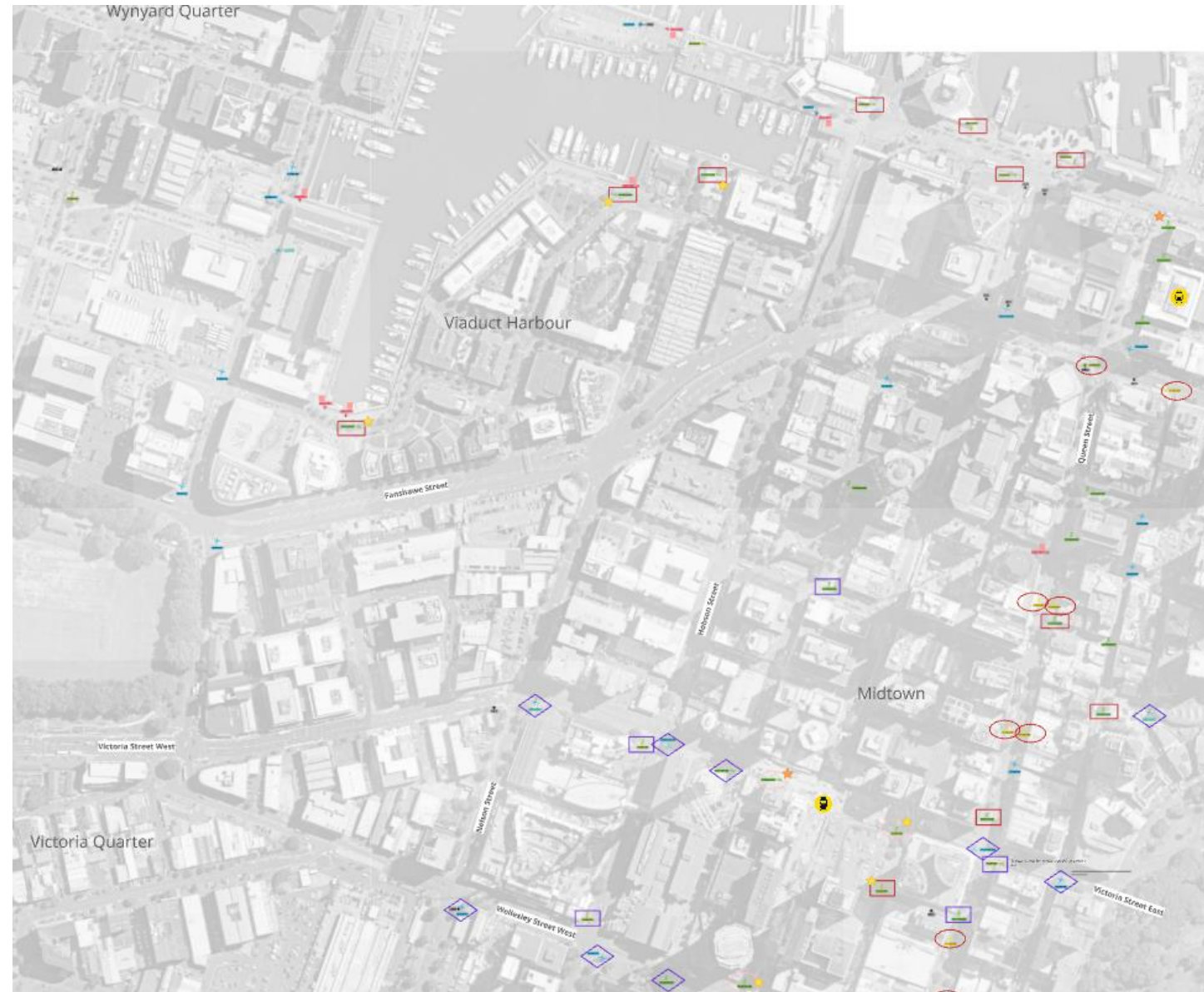


# Connected system for the whole city

New signage is being rolled out, with a priority on signage around the new station first along with replacing existing signs, then fill in the Queen st valley then move to the outer area over the next 12 months.

This image shows the sites of the signs in this package of works.

There will be more signs included in the Wellesley st West upgrade that will fill in the gaps along that stretch of the journey.



# New Timetable



# City Rail Link Timetable

## Off-peak services increased from Day 1:

- 4 trains per hour per direction, means a train every 15 minutes. Improved from current 20 minute.

## Peak services will increase in steps after Day 1.

- Current Eastern, Western and Southern lines have 6 trains per hour per direction.
- 8 trains per hour means **on average** every 7½ minutes, but in practice these are not spaced equally (e.g. 6 and 9 minutes), this is required to manage all train movements where AT train lines merge, and KiwiRail's Te Huia and freight.

Trains per hour per direction:	East West Line		South City Line	Onehunga West Line	Trains in CRL
	East	West			
Off-Peak (From Day 1)	↑ 4	4	↑ 4	2	8
Peak (Day 1 Transitional)	↑ 8 <sup>1</sup>	6	6	2	14
Peak (First Step-Up)	8	↑ 8 <sup>2</sup>	6	2	14
Peak (Second Step-Up)	8 (7-8 min)		↑ 8 <sup>3</sup>	2	16

<sup>1</sup> Six Manukau / Swanson and two Sylvia Park / Kingsland

<sup>2</sup> Two trains per hour extended from Kingsland to Henderson

<sup>3</sup> Two trains per hour added north of Ōtāhuhu subject to further testing and KiwiRail / Operator approval

Day 1 Direct rail journey time savings		Day 1 Travel time savings to new stations (across PT)	
West	Henderson to Waitematā ~37 min. Save 10 min – rail journey time saving.	Henderson to Te Waihorotiu ~35 min Save ~24 min – compared with previous train + walk journey.	
East	Rail travel time to Waitematā is the same.	Panmure to Karanga-a-Hape ~21 min Save ~14 min – compared with previous train + bus journey.	
South	Rail travel time to Waitematā is slightly longer as trains will go via Newmarket, Grafton and CRL rather than via Parnell. Shorter to new stations.	Ellerslie to Karanga-a-Hape ~20 min Save ~14 min – compared with previous train + bus journey.	
Onehunga	No travel time change for Onehunga Line. Benefits from off-peak single-seat service towards Henderson. At peak services to Maungawhau.		